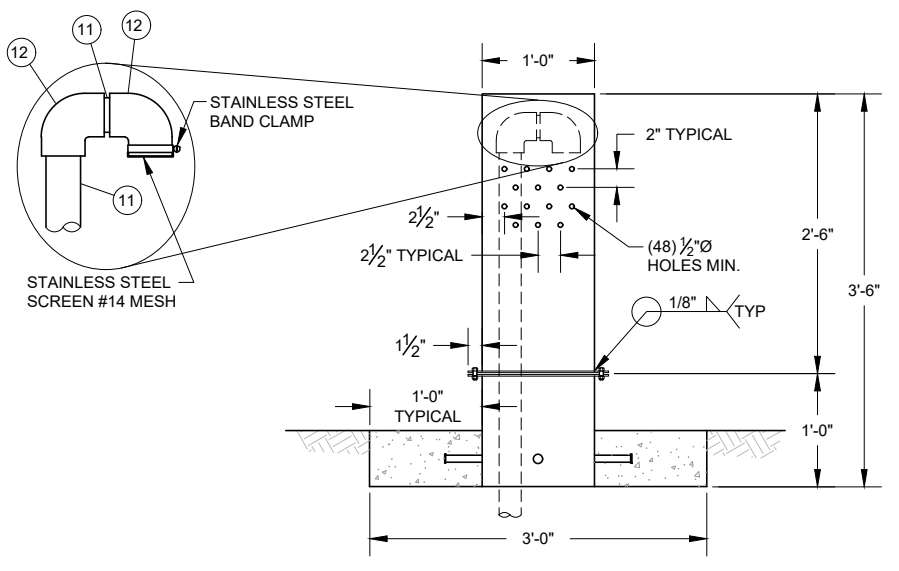
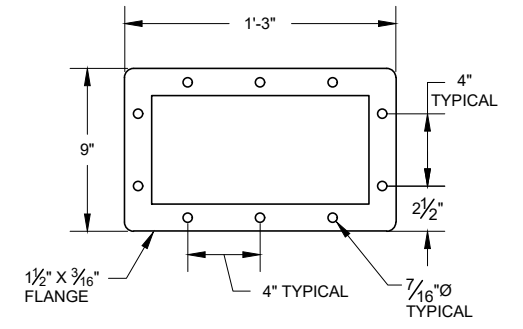
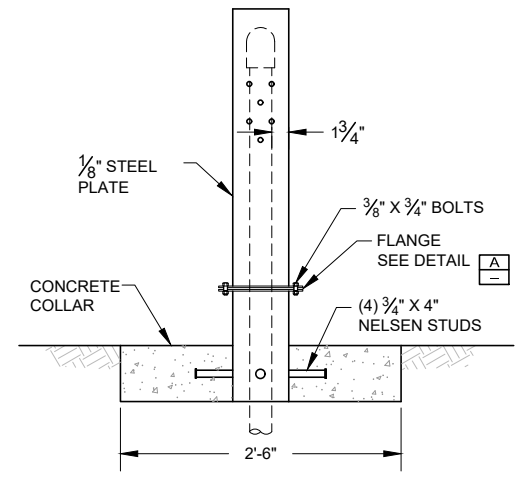


AIR RELIEF MH VALVE & FITTING SCHEDULE			
NO.	DESCRIPTION	SIZE	JOINT
1	KOR-N-SEAL MANHOLE BOOT	8"	-
2	PIPE	8"	-
3	LONG SLEEVE	8"	MJ
4	BRASS NIPPLE WITH TAP & ANVELET	1"	THD
5	BRASS BALL VALVE	1"	THD
6	AIR RELEASE VALVE (APCO 145??)	1"	THD
7	BRASS PIPE	1"	THD
8	BRASS 90° BEND	1"	THD
9	BRASS UNION	1"	THD
10	BRASS COUPLING	1"	THD
11	PVC PIPE SCH 40	1"	THD
12	PVC 90° BEND SCH 40	1"	THD
13	BRASS REDUCING TEE	1" X 1/2"	THD
14	BRASS PIPE	1/2"	THD
15	BRASS BALL VALVE	1/2"	THD
16	FLOOR DRAIN	4" X 2"	-
17	PIPE SUPPORT (GRINNELL 254 OR APPROVE EQUAL)	SIZED FOR PIPE	-

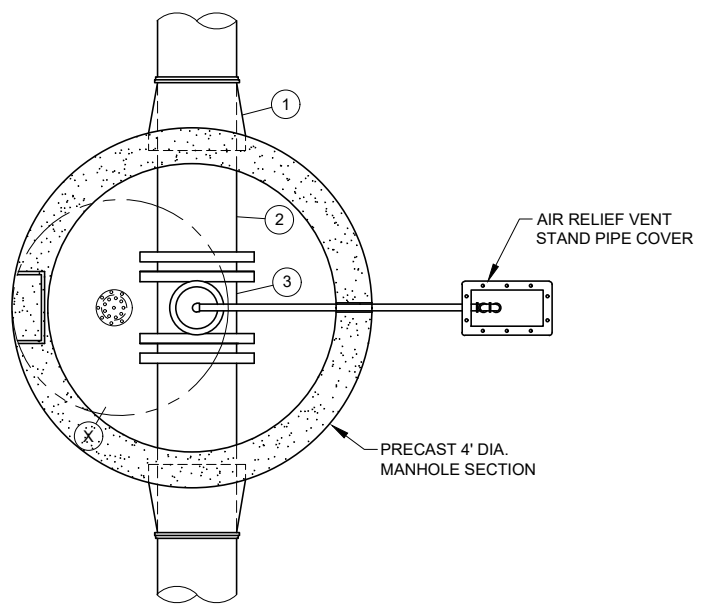
- NOTE:
- HOT DIP GALVANIZE AIR RELIEF VENT STAND PIPE COVER AFTER FABRICATION.
 - AIR RELIEF VENT STAND PIPE SHALL BE LOCATED IN FIELD AS DIRECTED BY ENGINEER.
 - PROVIDE THRUST RESTRAINT FOR ALL FITTINGS.



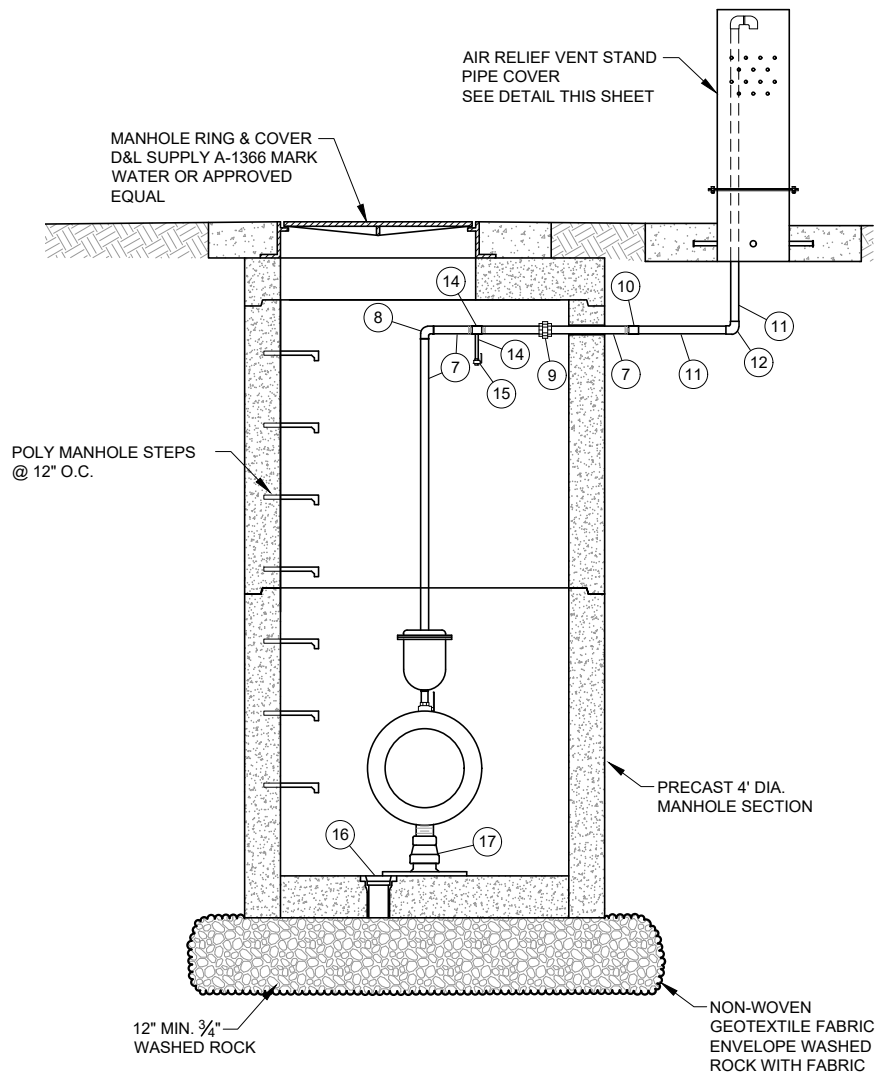
AIR RELIEF VENT STAND PIPE
COVER DETAIL
N.T.S.



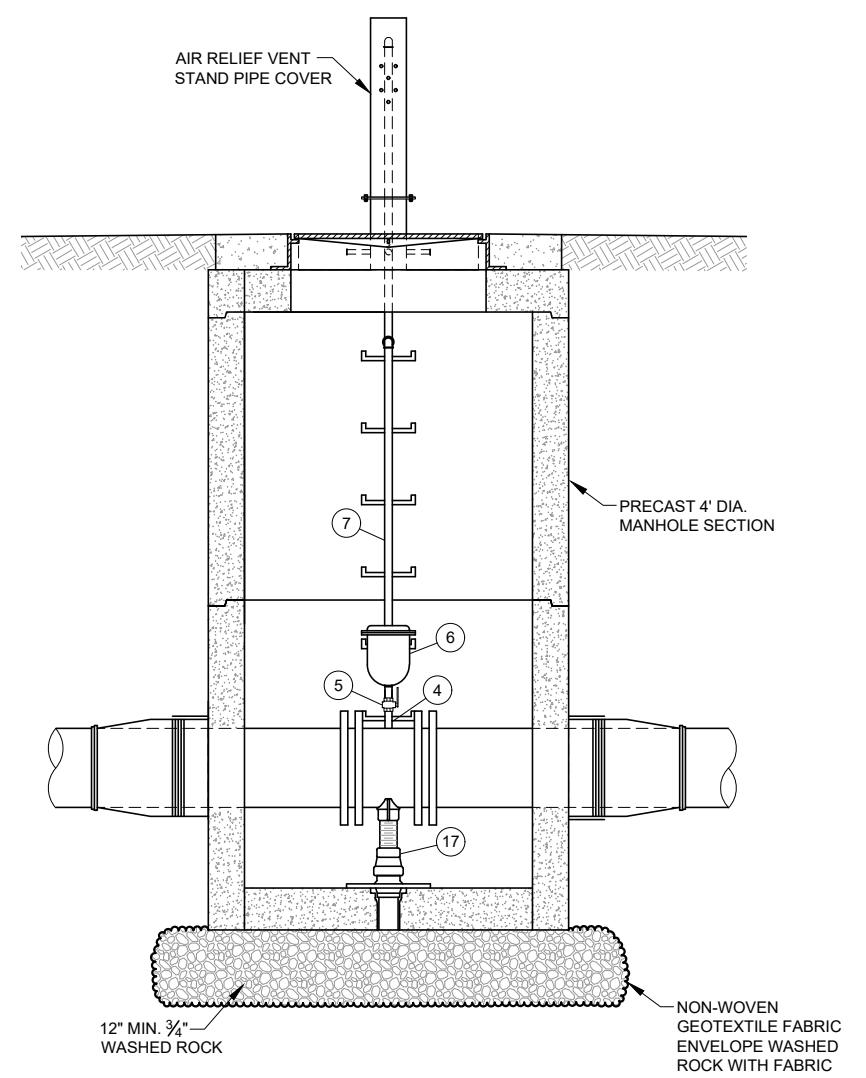
FLANGE DETAIL A
N.T.S.



AIR RELIEF / VACUUM VALVE
DETAIL
N.T.S.



SECTION 1
N.T.S.



SECTION 2
N.T.S.

AIR RELEASE ASSEMBLY